



## AVK PENTOBX - WATER METER BOUNDARY BOX

8054/52-001

Sealed, telescopic with a square grade B composite material surface box, PN16

The S8054/52-001 PENTOBX is a Class 1.S.B fully sealed water meter boundary box with a square composite material grade B loading surface box, allowing Automated Meter Reading (AMR) technology. Height adjustable box with patented demountable push-fit connections.

### Product description:

Water meter boundary box for installation in footpaths and driveways with regular traffic; able to withstand an 8 Tonne loading

### Standards:

- Class 1.S.B fully sealed Boundary Box under BS 5834-1: 2017
- Surface Box designed according to BS 5834-2: 2011
- Push-fit joints meet the standards according to WIS 4-32-11
- 3/4" BSP POM manifold tested to BS 8588:2017

### Tests:

- Hydraulic pressure test of 16 Bar
- Load tests exceeding 81.2 kN as per BS 5834-2: 2011
- Tested under conditions for water tightness as per BS 5834-1: 2017
- Meets the minimum head loss requirements as per BS 5834-1: 2017
- Tested under conditions for prevention against freezing as per BS 5834-1: 2017
- Tested under conditions for permeation as per BS 8588:2017, Appendix B

### Test/Approvals:

- Approved according to WRAS

### Features:

- The unique square surface box element has an 8 Tonne rating in accordance with BS 5834-2: 2011 and is therefore suitable for footpaths and driveways with regular traffic
- Surface box materials allow uninterrupted AMR radio signals
- Metal detection plate for easy detection
- Lightweight, ensuring easy handling compared to equivalent iron boxes
- Surface box accommodates a 7° angle of tilt for easy surface alignment
- Fully sealed unit to prevent ingress of ground water and contaminants
- Telescopic height adjustment
- Manifold body is a one piece moulding reducing the risk of leakage
- Patented push-fit connections allow quick installation and easy disassembly
- 3/4" BSP POM manifold has been tested with PE barrier pipe systems and passed the test outlined in BS 8588, Appendix B
- 1 1/2" BSP meter housing for a concentric water meter with a flow rate of Qn 1.5-2.5, incorporating a non-return valve
- 1/4-turn ball valve with removable key for quick and secure isolation



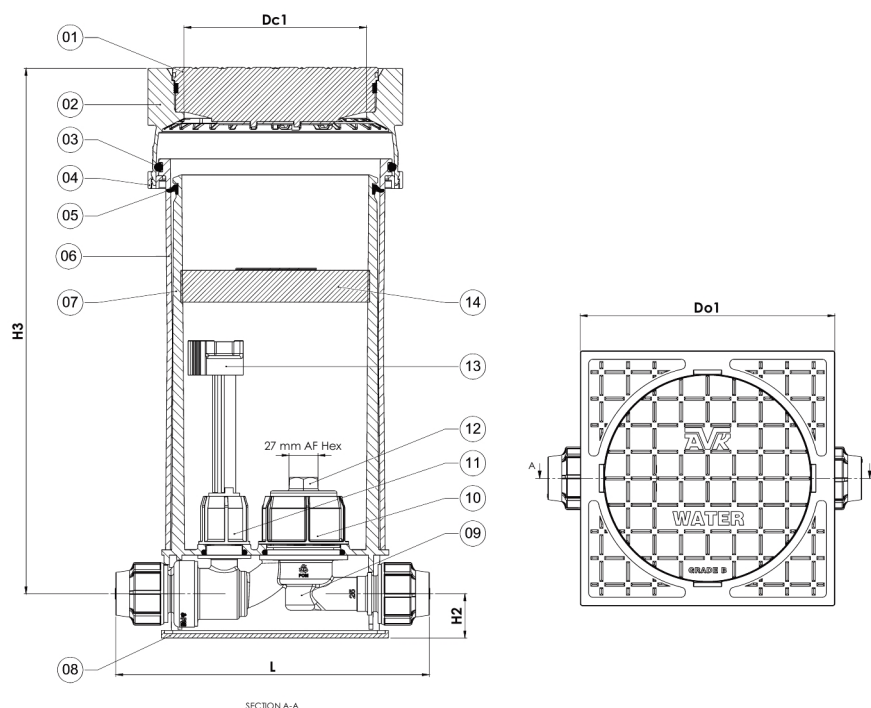
Expect... **AVK**

The designs, materials and specifications shown are subject to change without notice due to the continuous development of our product range.

# AVK PENTOBIX - WATER METER BOUNDARY BOX

8054/52-001

Sealed, telescopic with a square grade B composite material surface box, PN16



## Component list:

1. Cover	PP	8. Baseplate	PP
2. Frame	PP	9. Manifold	POM
3. O-ring	NBR rubber	10. Nut	POM
4. Retainer ring	PP	11. Nut	POM
5. Seal	EPDM rubber	12. Blind plug	POM
6. Guard	PP	13. Key	POM
7. Base	PP	14. Frost protection pad	Foam

Components may be substituted with equivalent or higher class materials without prior notification.

## Reference nos. and dimensions:

AVK ref. no.	Pipe diam. mm	SDR	Connection	Dc1 mm	Do1 mm	H2 mm	H3 mm	L mm	Theoretical weight / kg
8054-120-521110301000	20	9	PUSHFIT	170	240	40	495-805	300	5.4
8054-121-521110301000	1/2"	HG	PUSHFIT	170	240	40	495-805	300	5.4
8054-125-521110301000	25	11	PUSHFIT	170	240	40	495-805	300	5.4
8054-132-521110301000	32	11	PUSHFIT	170	240	40	495-805	300	5.4
8054-326-521110301000	-	-	3/4" BSP FEM	170	240	40	495-805	300	5.4